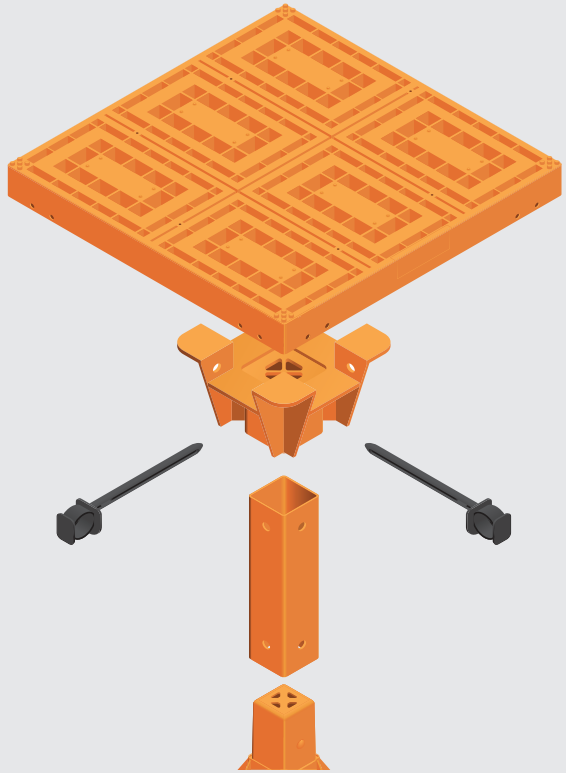


**Build more.[™]
Make more.**



Training Manual Installation Guide

workdek.com

workdek[™] 





Workdek makes light work of building work.

Now builders can complete work twice as fast by walking on a continuous, flat surface anywhere on site with their tools and heavy machinery. This is made possible by Workdek's clever, lightweight injection moulded plastic design. Components are lightweight and easy to put together. Yet once locked into place, they're incredibly strong and stable with each square metre deck panel easily supporting 250KGs. It's like you're standing on flat, solid ground no matter the height.

- 03. Workdek safety system**
- 04. Unpacking and loading**
- 05. Personal protective equipment**
- 06. Competence and vigilance**
- 07. Components**
- 08. Component assembly**
- 09. Erection technique**
- 17. Pre-handover inspection**
- 19. Inspection routine**
- 20. Faults**
- 21. Striking**
- 22. Care and storage**
- 23. Notes**
- 24. Contact details**



Unpacking and loading

- Break the packing straps that hold the pack of panels together.
- Load the panels neatly and safely in the area that requires the platform.
- Load the legs required and stack them safely.
- Load the base and head plates into the area.
- Load the required amount of securing pins.
- Load the required amount of cam/securing straps.
- If needed, assemble the legs/base/head plates.



Fig 01.



Fig 02.



Personal protective equipment

To install or strike the Workdek platform system you will need **personal protective equipment** to do so safely.

A **Risk Assessment** and **Method Statement** should also be available for the work you are about to do.

Ensure you work to your **Method Statement**. If you cannot, stop work and speak to your supervisor/line manager and report to the site manager, as your **Method Statement** will need to be amended.

You will need the following **personal protective equipment**:

- **Hard Hat to EN 397**
- **Steel Toe Cap Boots EN ISO 20345:2004/EN ISO 20345:2007/EN 345**
- **High Vis–Vest/jacket to EN471 Class 2**
- **Gloves to EN 388**
- **Safety Eyewear to BS EN 166–1**

Ensure you wear the equipment following the manufacturer's guidance and your training.

In all cases the wearing of hard hats, foot protection, high visibility vests/jackets and gloves is mandatory while on site.



Competence and vigilance

Be competent:

- Are you trained to install Workdek?
- If not you will require training to install it correctly.

Be vigilant:

- Do you have the correct Information?
- Is the structure suitable?
- Has the mortar gone off?
- Is the build the right height for your system?
- Is YOUR work area safe?
- Is YOUR work area clear of debris?
- Have YOU checked your components for defects/damage?

If you answer “no” to any of these questions then stop and ask your supervisor/line manager. In the case of a safety issue speak to the site manager so any issues can be dealt with accordingly.



Components

There are 5 components:

- 1000mm x 1000mm
Workdek deck panel – 10.43KG
- Workdek deck leg – 1.81KG
- Workdek deck base/head plate – 0.28KG
- Workdek deck securing pin – 0.028KG
- Workdek cam/securing strap – 0.085KG



Fig 03.



Fig 04.



Fig 05.



Fig 06.



Fig 07.



Fig 08.



Component assembly

Attach head and base plates to the leg.

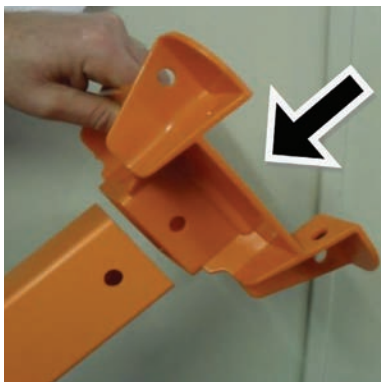


Fig 09.

Put the securing pin through the pin holes securing the base and head plates to the leg.



Fig 10.



Erection technique

- Prior to installation visually inspect the Workdek platform components for any defects.
- Generally it is best to start by building the platform along the two longest walls first (Fig.11).
- Starting with one panel in the corner, then build each open edge along the wall forming an L shape.
- Then build outwards from the L shape.
- It is more efficient to put the securing pins in as you go, securing the panels to the head plate.



Fig 11.



Erection technique

- When building outwards from the L shape build the deck like **(Fig.12)**. In this way, the deck will remain stable.



Fig 12.

- Always be aware who your on site first aid person is and how you can contact them in an emergency should you need them.



Erection technique

- When positioning the panels take care to straighten the legs.
- Make sure the corners of the panels are in position on the head plate.



Fig 13.

- Put the securing pins in place as you work.

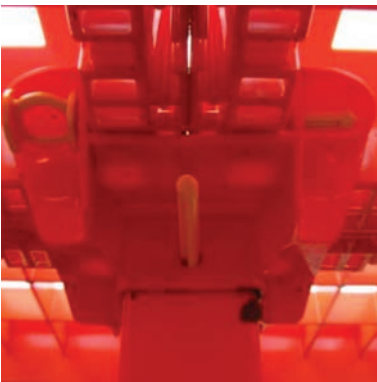


Fig 14.



Erection technique

- Now place the remainder of the panels into position.



Fig 15.

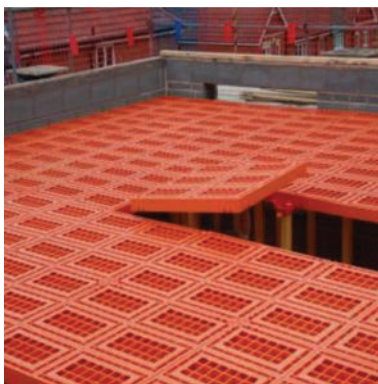


Fig 16.

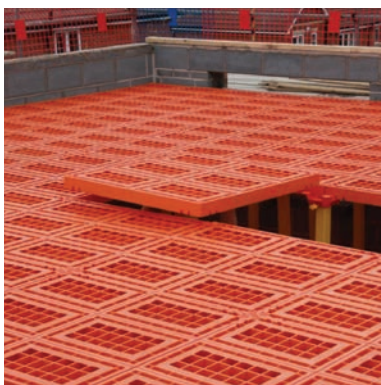


Fig 17.

- Remember to put the securing pins in.



Erection technique

- When you reach the adjacent walls you may need to create an overlap to fit the platform to the wall.
- Try adjusting the head plate positions where you started to gain enough space to fit the panel in.
- If the panel does not fit you will need to overlap them (Fig18).
- You will need a cam/securing strap for an overlap, this will make the deck fit tight to the walls.



Fig 18.



Erection technique

- Put the cam/securing strap through the panels (**Fig.19**).

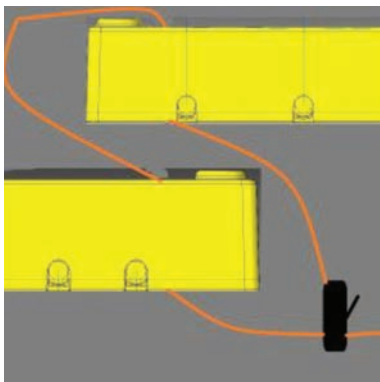


Fig 19.

- Place the cam/securing strap in the positions provided.

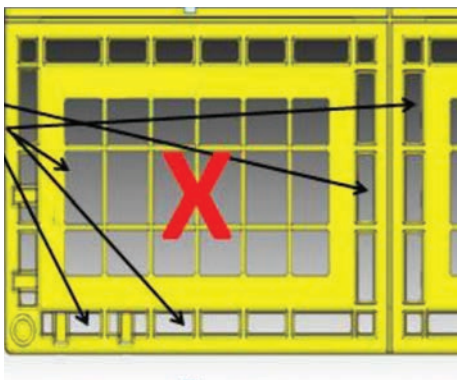


Fig 20.

- The cam/securing strap positions are located in the strongest parts of the panel (**Fig.20**).



Erection technique

- Pull the cam/securing straps tight. This will tighten the deck, eliminating movement (**Fig.21**).

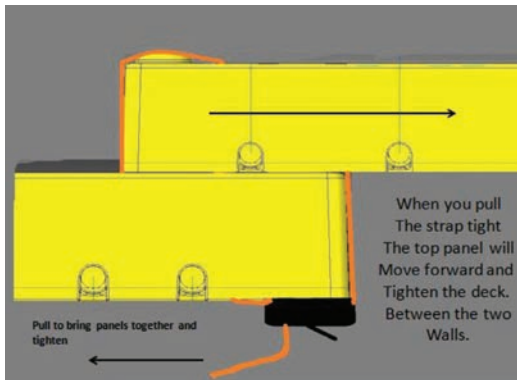


Fig 21.

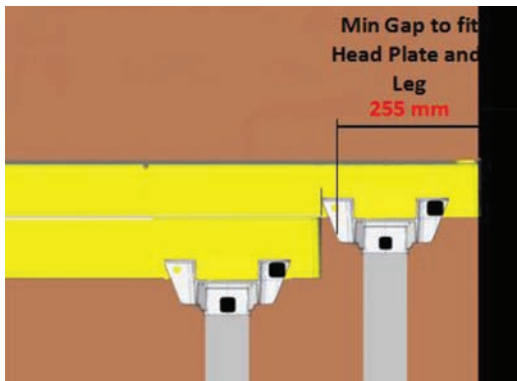


Fig 22.



Erection technique

- When overlapping panels always put a leg and head plate into one of the head plate positions to support the overlapped panel (**Fig.22&23**).
- If you cannot fit a leg, there will be sufficient overlap onto the deck to support the overlapped panel.
- You will need to use extra base plates for the legs used on overlaps to increase the height of the leg.
- Add an extra cam/securing strap in the centre of the panel and tighten this down to the panel beneath to prevent any lifting or movement of the panel.

TAKE NOTE: If you can fit a head plate and leg in then put it in!

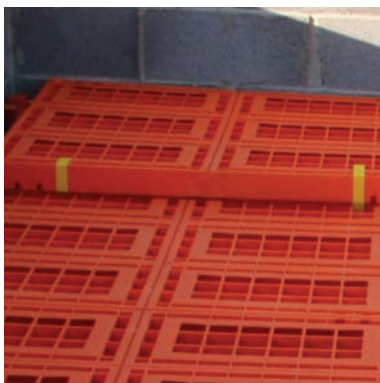


Fig 23.



Pre-handover inspection

- Check the securing pins are in position: legs, head and base plates.
- Check the legs are all straight.
- Check the cam/securing straps are tight.
- Check there are extra base plates used on the overlaps.
- Check there are no gaps greater than 100mm.
- Check there is no movement in the deck. **It should be tight to the walls, at least 3 e.g. a garage with a scaffold on the open end containing the deck.**
- The Workdek platform is NOT a freestanding system, it must be contained.



Fig 24.



Pre-handover inspection

- Once you are happy that the platform is safe and sound you may inspect it from above – if SAFE to do so.



Fig 25.

- You can see very easily from on top of the deck whether or not the securing pins and securing straps are in position.



Fig 26.

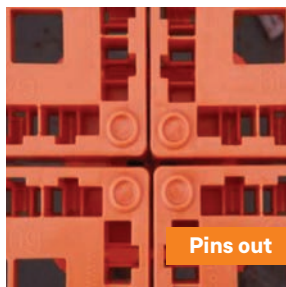


Fig 27.

- When YOU are happy that the platform is correctly installed and SAFE to access, hand it over to the client/site management.



Inspection routine

- Prior to striking, the platform should be inspected for damage following use.
- Check for any debris: bricks, blocks, scaffolding or timber (may contain nails) etc.
- Check for damage to the Workdek platform components.
- Make provision for striking and removal from site.



Damage caused by misuse

Fig 28.



Faults

Check for:

- Damaged legs
- Damaged base or head plates
- Damaged panels (Fig.28)
- Cut cam/securing straps
- Broken securing pins.

Damage, caused by:

- Cracks/splits (impact/overloading)
- Cut (knife/saw/power tools etc. Fig.28)
- Penetrations (nails/power tools etc).



Fig 29.



Striking

Striking is simply the reverse of the installation process.

These simple points should be followed:

- Wear eye protection in case of debris on the platform.
- Remove the cam/securing strap.
- Remove the securing pins.
- Remove the panels and legs.
- Place the panels and legs close to the extraction point.
- Observe your manual handling procedures.
- Use mechanical lifting aids to lift components down from high levels.
- Store ready for next use.
- Use the kinetic lifting technique when lifting heavy loads.

Examination

- Examine the components for damage.
- Examine the components for defects.
- Quarantine any damaged or defective components.
- Return the Workdek platform to your storage area ready for next use.



Care and storage

On return to your storage area the Workdek platform components should be checked for damage prior to storage and/or being put back into service.

- Check for any damage or defects.
- Quarantine any damaged or defective components to prevent further use.
- Pallet the panels 25 high and secure with a strapping too.
- Gather the legs into an 8x8 pack and secure them with a strapping tool (with base and head plates left on).
- Place the securing pins into a suitable container.
- Place the cam/securing straps in a suitable container and place in a dry store.



Fig 30.

**Build more.[™]
Make more.**

Call: 0800 3255 7233 Online: [workdek.com](https://www.workdek.com)

